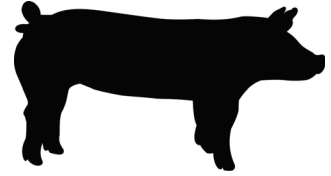
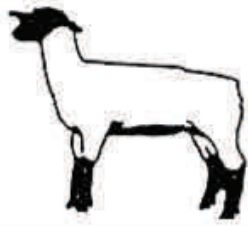
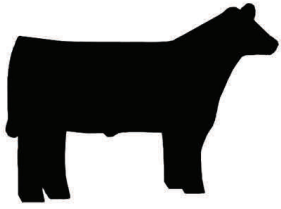


Gary Fuller Spring Classic

On the Lyon County Fairgrounds



May 7-8, 2016, Lyon County Fairgrounds, Emporia, KS

Pre-Entries due April 29 • \$15 per head

\$25 per head after April 29

SCHEDULE:

Saturday, May 7 — sheep, goats and beef

9:00-9:30 a.m.	Sheep Weigh-in/Breeding Check-in
10:00-10:30 a.m.	Meat Goat Weigh-in/Breeding Check-in
10:30 a.m.	Sheep Show
12:00 p.m.	Goat Show (or 30 minutes after Sheep Show)
3:00-4:30 p.m.	Market Beef weigh-in & breeding heifer check-in
4:00 p.m.	Bucket Calf Check-in
4:15 p.m.	Bucket Calf Show
5:30 p.m.	Beef Show — show order: heifers, showmanship, Lyon County only class, followed by market

★ We host a no-fit show — no paint/no adhesive ★

Sunday, May 8 — swine

7-8:30 a.m.	Scales Open (exhibitors weigh own hogs)
9:00 a.m.	Swine Show — beginning with showmanship

The Bluestem Farm & Ranch Supply Prize Trailer will be available for awards.
Champion prospect market hog will receive a Gary Fuller Spring Classic buckle!

All other prospect market grand champions and reserve grand champions will
receive embroidered chairs!

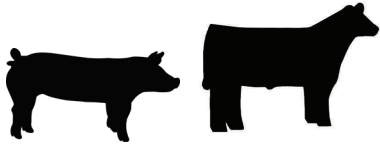
Open to 4-H/FFA youth ages 7 to 18 (4-H age) exhibiting sheep, meat
goats, market steers and heifers, breeding heifers, bucket calves and swine

Entry forms available online at www.lyon.ksu.edu

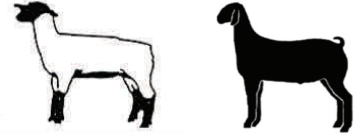


For more information contact:
Lyon County Extension Office
2632 W Hwy 50
Emporia, KS 66801
(620) 341-3220





Gary Fuller Spring Classic



2016 Show Guidelines

Show coordinators reserve the right to keep any individual from showing in the Gary Fuller Spring Classic for any reason they deem necessary.

Health Requirements:

- Show officials reserve the right to remove any animal from the grounds if it appears diseased, emaciated or extremely unthrifty. All animals are subject to examination by show officials/representatives. If infected animals are found, the entire trailer will be sent home.

Sheep/Meat Goats:

- No bedding is allowed - Mats only. Bring generators.
- Exhibitors must show their own animal for showmanship classes.
- All market classes will be weighed and divided into classes by weight only.
- Five head or more of a breed will constitute a ewe class.
- All animals must be identified with a registered tattoo or an official USDA premise ID tag. Kids or lambs, under 8 weeks of age, accompanying their dams, are exempt from identification/tagging requirements.
- Animals shown in Market classes are not eligible to show in breeding classes. Market lambs may be ewes or wethers and must be slick shorn. No artificial coloring allowed.

Beef:

- No-fitting allowed (no paint/no adhesive)
- All market classes will be weighed and divided into classes by weight and breed. Breeding heifers cannot shown as market heifers.
- Must have 3 head to make a breed class.
- Heifers must have registration papers to show in a breed class.
- Exhibitors must show their own animal for showmanship classes.
- No bucket calves in showmanship classes.

Swine:

- All market classes will be weighed and divided into classes by weight and breed.
- Must have 5 head to make a breed class.
- Exhibitors must show their own animal for showmanship classes.

Show order/Class No.

There will be no charge for showmanship classes.

Saturday, May 7

Sheep:

- Class 1 — Showmanship 14 & Over
- Class 2 — Showmanship 10-13
- Class 3 — Showmanship 7-9

Breed Show — Dorset

- Class 4 — Ewe Lamb
- Class 5 — Yearling Ewe

Breed Show — Hampshire

- Class 6 — Ewe Lamb
- Class 7 — Yearling Ewe

Breed Show — Suffolk

- Class 8 — Ewe Lamb
- Class 9 — Yearling Ewe

Breed Show — Crossbred

- Class 10 — Ewe Lamb
- Class 11 — Yearling Ewe

Breed Show — AOB

- Class 12 — Ewe Lamb
- Class 13 — Yearling Ewe

Supreme Ewe

Prospect Market Show (110 lb. wt. limit for champion)

- Class 14 — All breeds
- Class 15 — Lyon Co. Market Lambs

Meat Goats:

- Class 16 — Showmanship 14 & Over
- Class 17 — Showmanship 10-13
- Class 18 — Showmanship 7-9
- Class 19 — Prospect Meat Goats, classes broken by weight
- Class 20 — Lyon Co. Meat Goats

Breeding Doe

- Class 21 — 0-6 months
- Class 22 — 7-12 months
- Class 23 — 13-24 months

Beef:

- Class 24 — bucket calves

Heifers (5 head/breed or show AOB):

- Class 25 — Angus
- Class 26 — Red Angus
- Class 27 — Brangus

Heifers, cont.:

- Class 28 — Commercial
- Class 29 — Charolais
- Class 30 — Chianina
- Class 31 — Gelviah
- Class 32 — Hereford
- Class 33 — Limousin
- Class 34 — AOB
- Class 35 — Maine Anjou
- Class 36 — Shorthorn
- Class 37 — Simmental

Showmanship

- Class 38 — Showmanship 14 & Over
- Class 39 — Showmanship 10-13
- Class 40 — Showmanship 7-9

Market Steers (3head/breed or show under crossbred):

- Class 41 — Lyon County only Market Steer/Market Heifer
- Class 42 — Angus
- Class 43 — Brangus
- Class 44 — Red Angus
- Class 45 — Appendix Shorthorn
- Class 46 — Charolais
- Class 47 — Chianina
- Class 48 — Gelviah
- Class 49 — Hereford
- Class 50 — Limousin
- Class 51 — Maine Anjou
- Class 52 — Shorthorn
- Class 53 — Simmental
- Class 54 — Crossbred

Market Heifers:

- Class 55 — AOB

Sunday, May 8

Swine:

- Class 56 — Showmanship 14 & Over
- Class 57 — Showmanship 10-13 Years
- Class 58 — Showmanship 7-9 Years
- Class 59 — Duroc
- Class 60 — Hampshire
- Class 61 — Yorkshire
- Class 62 — Crossbred
- Class 63 — AOB
- Class 64 — Lyon County Swine Class (all breeds, all weights — Lyon County 4-Hers only)

Exhibitors are to be 4-H/FFA youth ages 7 to 18 (4-H age).
The Lyon County Extension Office and all concerned
are not responsible in case of accident or injury.

Gary Fuller Spring Classic REGISTRATION FORM



Pre-Entries Must be Postmarked by Friday, April 29, 2016

One Exhibitor per Entry Form

Name: _____

Address _____

City, State, Zip _____

Phone: _____ Age as of 01/01/16: _____

****No Fee for Showmanship or “Lyon County Only” Classes,
But You Still Must Register for Those Classes ****

All Other Classes \$15 each, and \$25 after April 29 and day of show

SPECIES	CLASS or CLASS No.	DOB (breeding classes only)	BREED	TAG #	FEE
TOTAL FEE DUE:					

Make Checks Payable to: “Lyon County 4-H Council”

Return Entry Form Along With Payment To:

Lyon County Extension Office
2632 W. Highway 50
Emporia, Kansas 66801